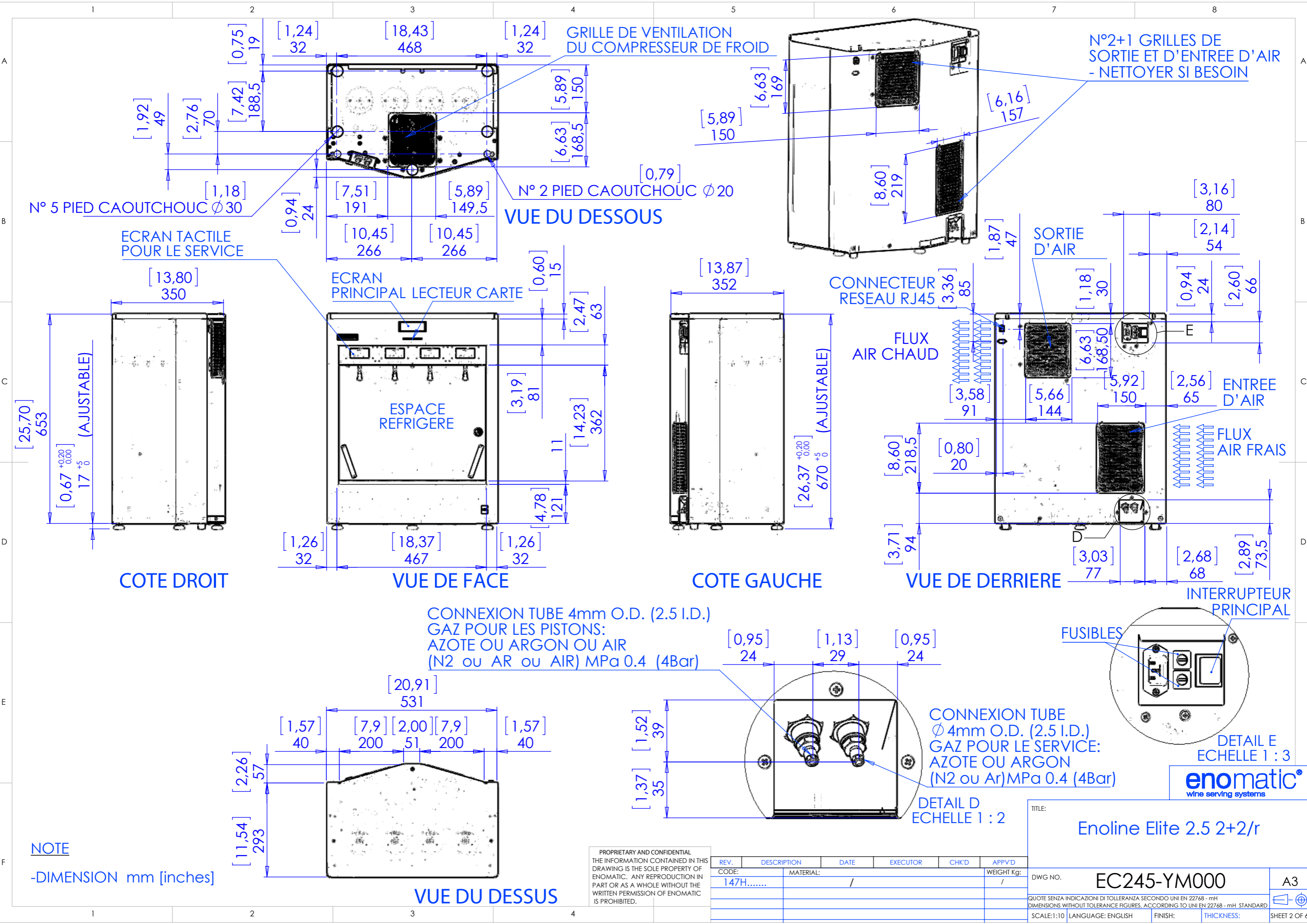




TITLE:		Enoline Elite 2.5 2+2/r	
DWG NO.	EC245-YM000	A3	
<small>QUOTE SENZA INDICAZIONI DI TOLLERANZA SECONDO UNI EN 22768 - mH DIMENSIONS WITHOUT TOLERANCE FIGURES, ACCORDING TO UNI EN 22768 - mH STANDARD</small>			
SCALE: 1:5	LANGUAGE: ENGLISH	FINISH:	THICKNESS:
SHEET 1 OF 6			

PROPRIETARY AND CONFIDENTIAL
 THE INFORMATION CONTAINED IN THIS DRAWING IS THE SOLE PROPERTY OF ENOMATIC. ANY REPRODUCTION IN PART OR AS A WHOLE WITHOUT THE WRITTEN PERMISSION OF ENOMATIC IS PROHIBITED.

REV.	DESCRIPTION	DATE	EXECUTOR	CHK'D	APPV'D
00	ISSUE	05/08/2015	M. BAGNOLI		
	CODE:				WEIGHT Kg:
	147H.....	/			/
	MATERIAL:				



N° 5 PIED CAOUTCHOUC Ø 30

GRILLE DE VENTILATION DU COMPRESSEUR DE FROID

N°2+1 GRILLES DE SORTIE ET D'ENTREE D'AIR - NETTOYER SI BESOIN

N° 2 PIED CAOUTCHOUC Ø 20

VUE DU DESSOUS

ECRAN TACTILE POUR LE SERVICE

ECRAN PRINCIPAL LECTEUR CARTE

CONNECTEUR RESEAU RJ45

SORTIE D'AIR

ESPACE REFRIGERE

FLUX AIR CHAUD

ENTREE D'AIR

FLUX AIR FRAIS

INTERRUPTEUR PRINCIPAL

CONNEXION TUBE 4mm O.D. (2.5 I.D.)
 GAZ POUR LES PISTONS:
 AZOTE OU ARGON OU AIR
 (N2 ou AR ou AIR) MPa 0.4 (4Bar)

CONNEXION TUBE
 Ø 4mm O.D. (2.5 I.D.)
 GAZ POUR LE SERVICE:
 AZOTE OU ARGON
 (N2 ou Ar) MPa 0.4 (4Bar)

FUSIBLES

DETAIL E
 ECHELLE 1 : 3

DETAIL D
 ECHELLE 1 : 2

enomatic
 wine serving systems

NOTE
 -DIMENSION mm [inches]

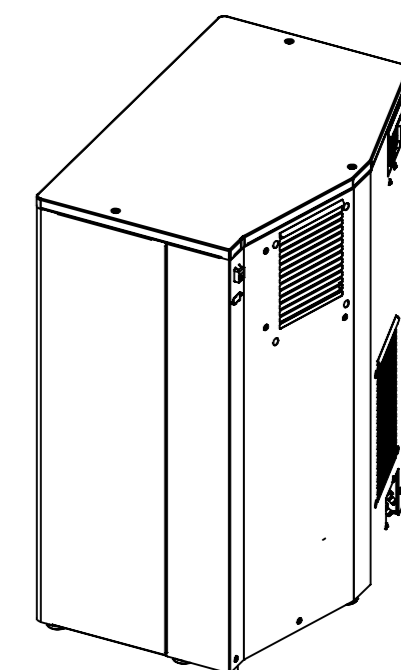
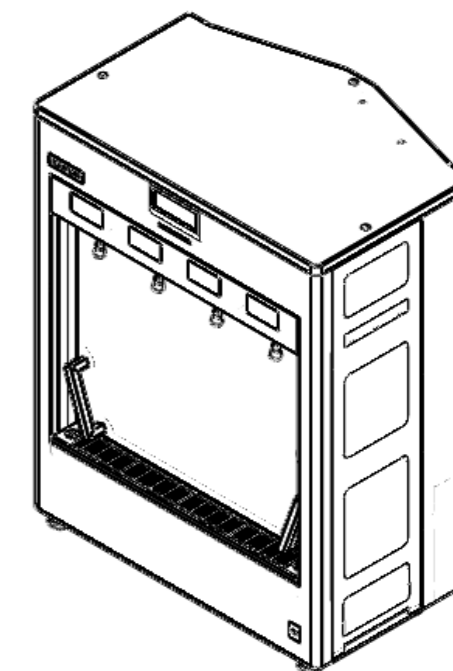
PROPRIETARY AND CONFIDENTIAL
 THE INFORMATION CONTAINED IN THIS
 DRAWING IS THE SOLE PROPERTY OF
 ENOMATIC. ANY REPRODUCTION IN
 PART OR AS A WHOLE WITHOUT THE
 WRITTEN PERMISSION OF ENOMATIC
 IS PROHIBITED.

REV.	DESCRIPTION	DATE	EXECUTOR	CHK'D	APPV'D
CODE:	MATERIAL:				WEIGHT Kg:
147H.....	/	/			/

TITLE:	Enoline Elite 2.5 2+2/r	
DWG NO.	EC245-YM000	A3
QUOTE SENZA INDICAZIONI DI TOLLERANZA SECONDO UNI EN 22768 - mH		
DIMENSIONS WITHOUT TOLERANCE FIGURES, ACCORDING TO UNI EN 22768 - mH STANDARD		
SCALE:1:10	LANGUAGE: ENGLISH	FINISH: THICKNESS:
		SHEET 2 OF 6

ENOLINE ELITE 2.5 2+2/r

TAILLE	HAUTEUR (MIN -MAX)	670-675 mm [26.37-26.58]				
	PROFONDEUR	352 mm [13.77]				
	LARGEUR	531 mm [20.91]				
POIDS (Kg)	43 Kg					
MATERIAUX	ACIER INOXYDABLE AISI 304 - ACIER PEINT					
SPECIFICATIONS ELECTRIQUES	MODELES DISPONIBLES					
	VOLTAGE (V)	100	115	110-127	200-220	220-240
	FREQUENCE (Hz)	50-60	60	60	50-60	50
	PUISSANCE (W)	115	115	115	115	115
	FUSIBLES	2X8Amp@125V	2X8Amp@V125	2X8Amp@125V	2X8Amp@250V	2X8Amp@250V
SPECIFICATIONS DU COMPRESSEUR DE FROID	GAZ REFRIGERANT	R-134A				
	CONTROLE TEMPERATURE	CONTROLEUR ELECTRONIQUE				
	METHODE DEGRIVAGE	AUTOMATIQUE PAR CONTROLEUR ELECTRONIQUE				
	AFFICHAGE TEMPERATURE	DIGITAL				
PRESSION DU GAZ POUR LE SERVICE (ARGON OU AZOTE)		MPa 0.4 (4 Bar)				
PRESSION DU GAZ POUR LES PISTONS (ARGON OU AZOTE OU AIR)		MPa 0.4 (4 Bar)				
FORMAT DES BOUTEILLES	HAUTEUR	280÷360mm [11.024÷14.173]				
	Ø MAX	102mm [4.016]				



NOTE

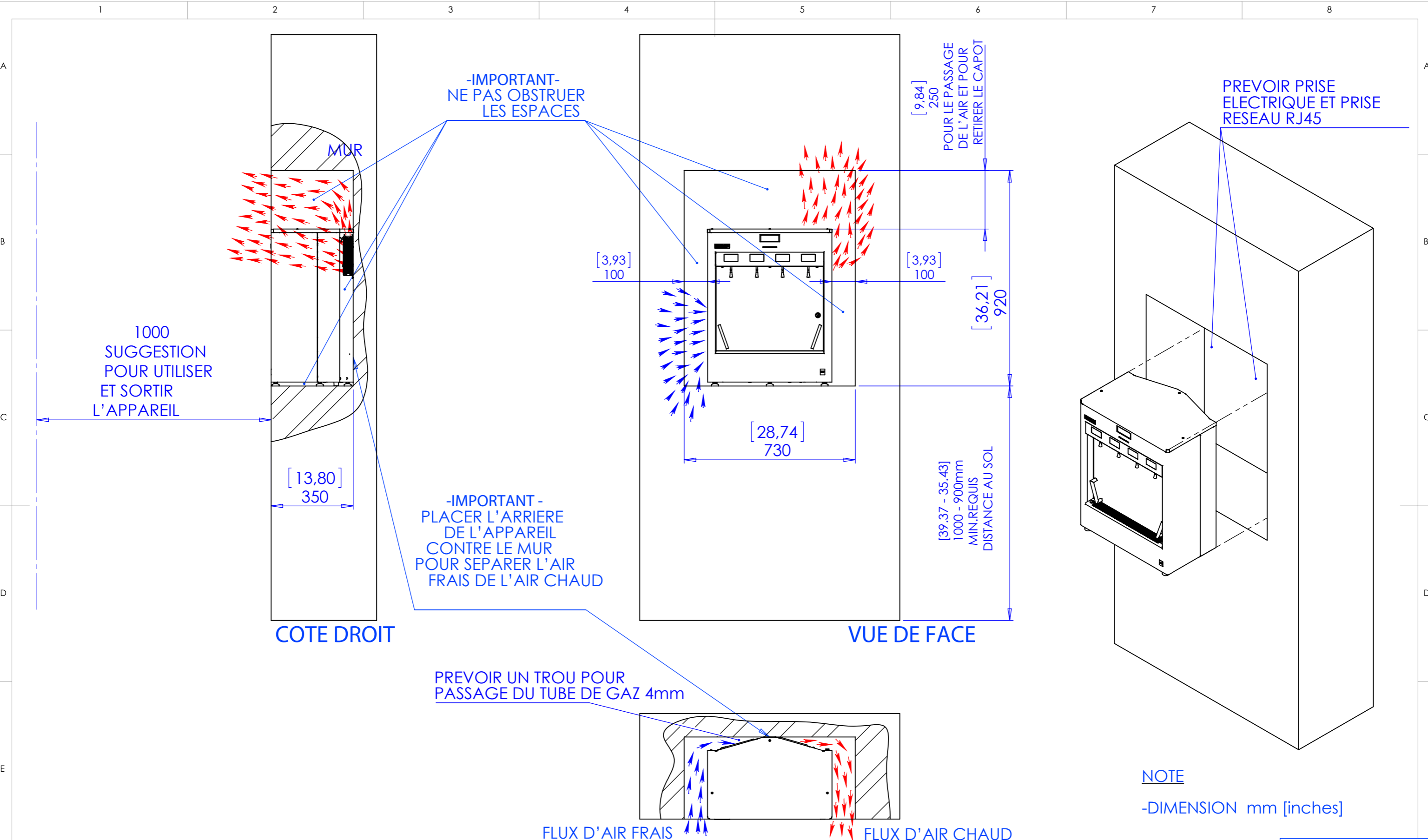
-DIMENSION mm [inches]

PROPRIETARY AND CONFIDENTIAL
THE INFORMATION CONTAINED IN THIS DRAWING IS THE SOLE PROPERTY OF ENOMATIC. ANY REPRODUCTION IN PART OR AS A WHOLE WITHOUT THE WRITTEN PERMISSION OF ENOMATIC IS PROHIBITED.

REV.	DESCRIPTION	DATE	EXECUTOR	CHK'D	APPV'D
CODE:	MATERIAL:			WEIGHT Kg:	
147H.....	/			/	



TITLE:	Enoline Elite 2.5 2+2/r	
DWG NO.	EC245-YM000	A3
QUOTE SENZA INDICAZIONI DI TOLLERANZA SECONDO UNI EN 22768 - mH DIMENSIONS WITHOUT TOLERANCE FIGURES, ACCORDING TO UNI EN 22768 - mH STANDARD		
SCALE:1:10	LANGUAGE: ENGLISH	FINISH: THICKNESS: SHEET 3 OF 6



**1 -EXEMPLE D'INSTALLATION-
DANS UNE NICHE
(DIMENSION IN mm [inches] ,REQUIS
POUR DES PERFORMANCES OPTIMALES)**

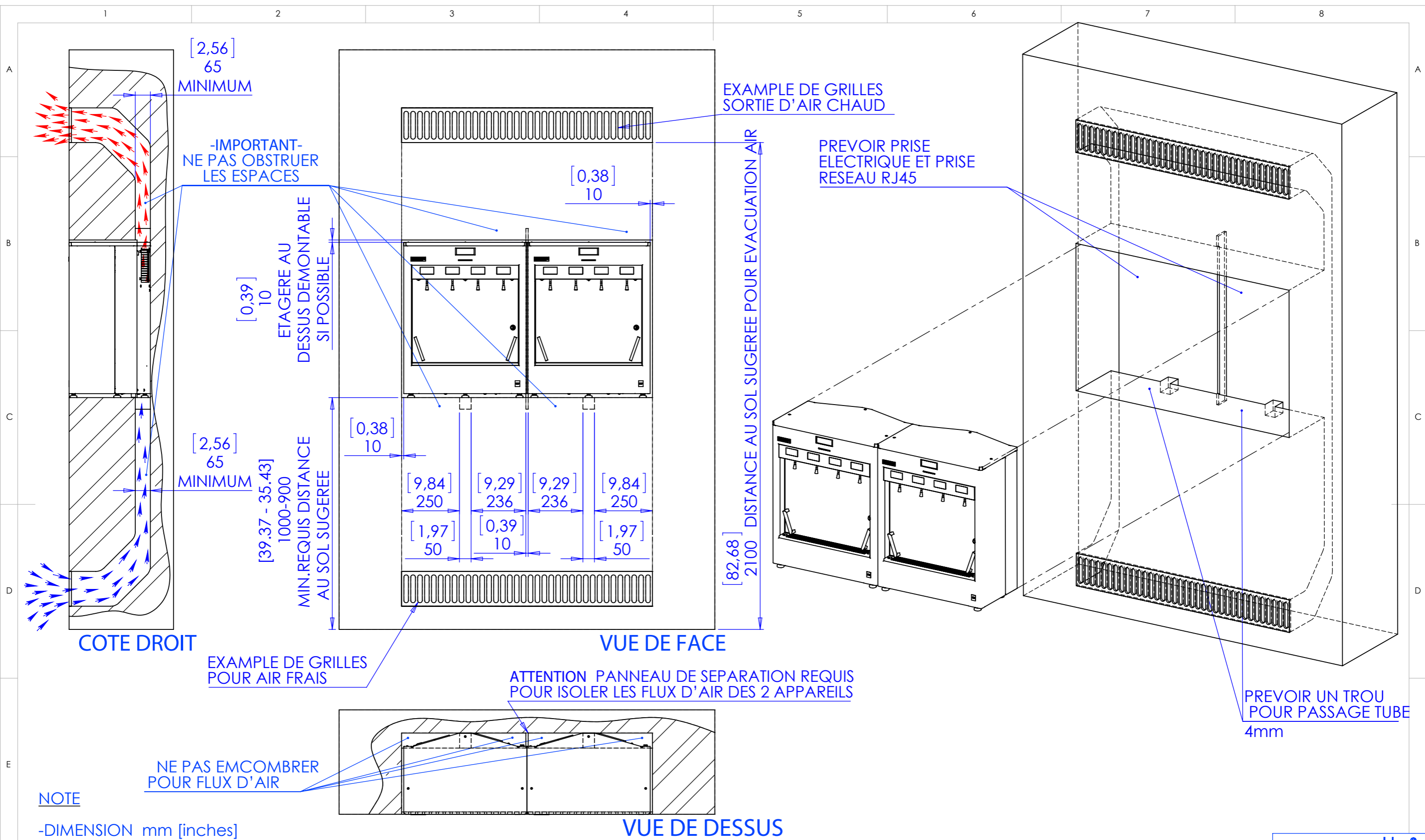
NOTE
-DIMENSION mm [inches]



TITLE:		Enoline Elite 2.5 2+2/r	
DWG NO.	EC245-YM000	A3	
QUOTE SENZA INDICAZIONI DI TOLLERANZA SECONDO UNI EN 22768 - mH DIMENSIONS WITHOUT TOLERANCE FIGURES, ACCORDING TO UNI EN 22768 - mH STANDARD			
SCALE:1:15	LANGUAGE: ENGLISH	FINISH:	THICKNESS:

PROPRIETARY AND CONFIDENTIAL
THE INFORMATION CONTAINED IN THIS
DRAWING IS THE SOLE PROPERTY OF
ENOMATIC. ANY REPRODUCTION IN
PART OR AS A WHOLE WITHOUT THE
WRITTEN PERMISSION OF ENOMATIC
IS PROHIBITED.

REV.	DESCRIPTION	DATE	EXECUTOR	CHK'D	APPV'D
CODE:	MATERIAL:				WEIGHT Kg:
147H.....	/				/



2 -EXEMPLE D'INSTALLATION ENCASTRE (DIMENSION EN mm [inches],REQUIS POUR DES PERFORMANCES OPTIMALES)

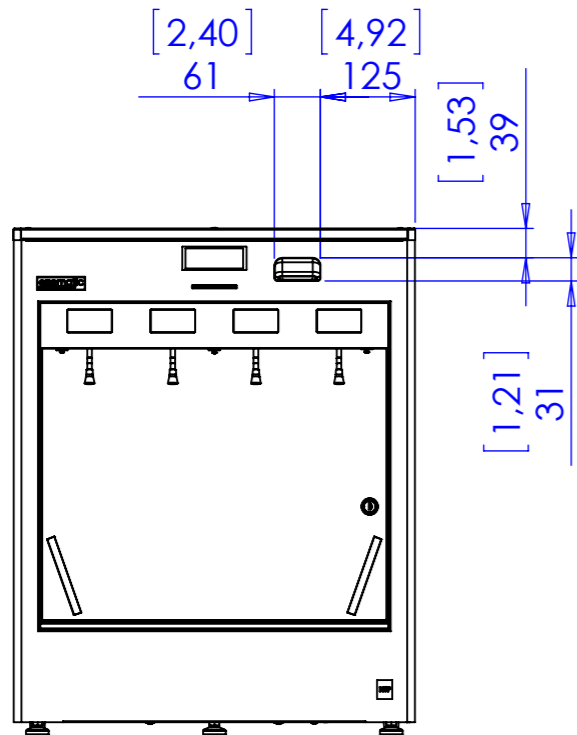


TITLE:		Enoline Elite 2.5 2+2/r	
DWG NO.	EC245-YM000	A3	
QUOTE SENZA INDICAZIONI DI TOLLERANZA SECONDO UNI EN 22768 - mH DIMENSIONS WITHOUT TOLERANCE FIGURES, ACCORDING TO UNI EN 22768 - mH STANDARD			
SCALE:1:15	LANGUAGE: ENGLISH	FINISH:	THICKNESS:
SHEET 5 OF 6			

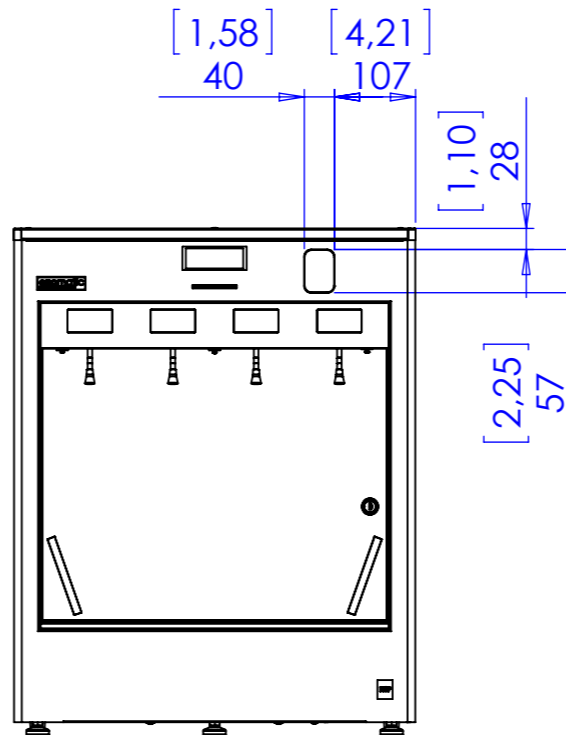
PROPRIETARY AND CONFIDENTIAL
THE INFORMATION CONTAINED IN THIS DRAWING IS THE SOLE PROPERTY OF ENOMATIC. ANY REPRODUCTION IN PART OR AS A WHOLE WITHOUT THE WRITTEN PERMISSION OF ENOMATIC IS PROHIBITED.

REV.	DESCRIPTION	DATE	EXECUTOR	CHK'D	APPV'D
CODE:	MATERIAL:				WEIGHT Kg:
147H.....	/				/

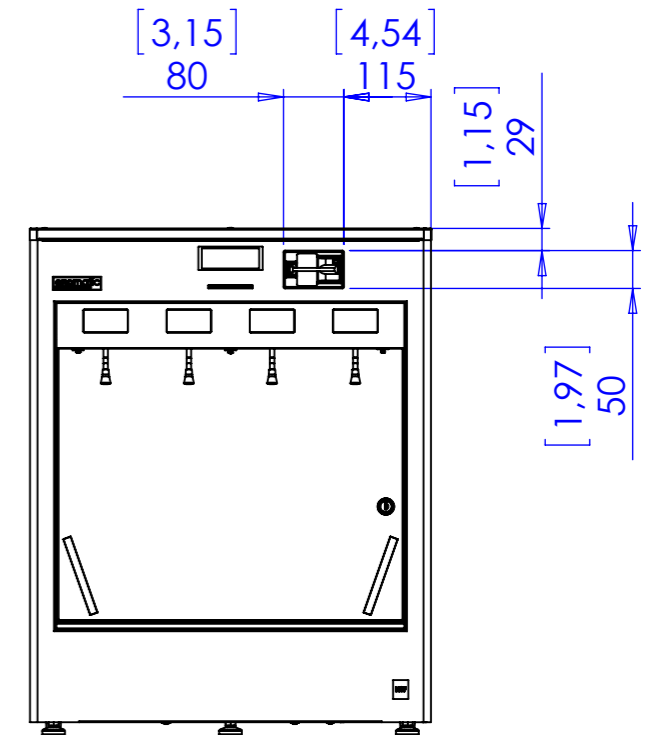
ENOLINE ELITE 2.5 2+2/r CONFIGURATIONS SPECIALES



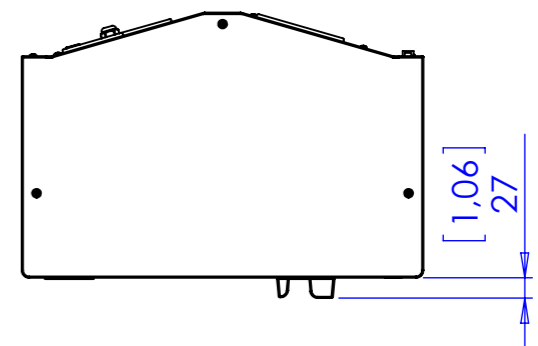
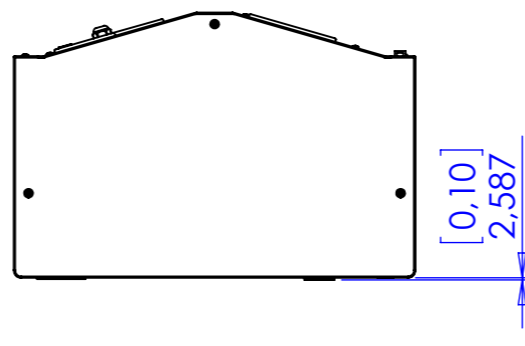
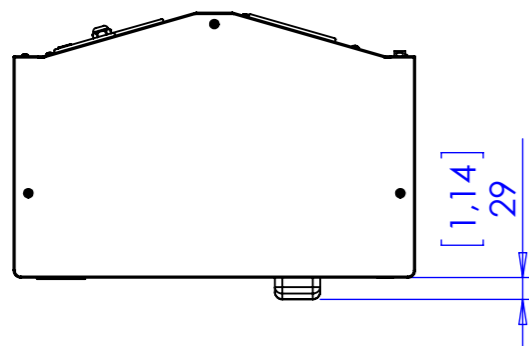
LECTEUR DE CODE BAR



LECTEUR D'EMPREINTE DIGITALE



LECTEUR DE CARTES MAGNETIQUES



NOTE

-DIMENSION mm [inches]

PROPRIETARY AND CONFIDENTIAL
THE INFORMATION CONTAINED IN THIS
DRAWING IS THE SOLE PROPERTY OF
ENOMATIC. ANY REPRODUCTION IN
PART OR AS A WHOLE WITHOUT THE
WRITTEN PERMISSION OF ENOMATIC
IS PROHIBITED.

REV.	DESCRIPTION	DATE	EXECUTOR	CHK'D	APP'VD
CODE:	MATERIAL:				WEIGHT Kg:
147H.....	/				/



TITLE:	Enoline Elite 2.5 2+2/r	
DWG NO.	EC245-YM000	A3
QUOTE SENZA INDICAZIONI DI TOLLERANZA SECONDO UNI EN 22768 - mH DIMENSIONS WITHOUT TOLERANCE FIGURES, ACCORDING TO UNI EN 22768 - mH STANDARD		
SCALE:1:10	LANGUAGE: ENGLISH	FINISH: THICKNESS: SHEET 6 OF 6